

Fantastic Fall Sports Season!



Mrs. Seitter's Café helps unloading the 21-bushel box of Fuji Apples donated by the Alpers family to celebrate Apple Crunch Day on October 17. Elementary students took a bite of a local apple during morning announcements and High School did so during Advisory.

In this issue

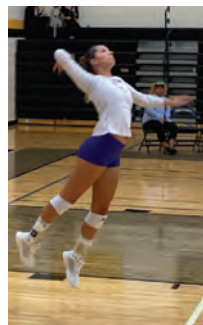
- New Staff*
- Field Trips*
- Classroom Happenings*
- Santa's Workshop*

Important Dates

12/21 - 1/02 Winter Break
1/16 No School, MLK Day

*Neighborhood
School Values.*

*World-Class
Education.*



Volleyball's Dig Abby Annual Charity Event, with an auction of business donations, bake sale, and ticket sales, benefits a local family battling cancer.

**Congratulations
to our athletes
and hats off to our
spirited spectators!**



WELCOME TO THE LELAND PUBLIC SCHOOL FAMILY!



Matt Peschel (Mr. Matt/Mr. Peschel), School Counselor & Dean of Students

Mr. Peschel grew up in Leland and attended LPS K-12. He has lived and worked elsewhere and is proud and happy to be back in the area with family and friends and to have his kids attend Leland. He loves spending time with his family, dog, nature, soccer, reading, and motorcycles. In his position he provides a variety of student support services to all students at LPS. He finds it totally inspiring to work with young people – the energy, the excitement, the challenge and reward and wants to grow as a counselor along with the school.

Mr. Matt's dog Mooch on the day he graduated from advanced training class at Petsmart. He also passed his "canine good citizen test" this summer!



Dr. Dave Botbyl (Dr. Dave), Interim Principal

In his role as Interim Principal, Dr. Dave supports students to be the center of all we do here at LPS. He is excited about the engagements he has with students every day and says LPS students are extremely caring and open-minded and represent the best of the IB Learner Profile! He looks forward to working on community service opportunities for students across all grades and in particular, coordination of opportunities to support Guatemalan students through an organization called Planting Seeds. He has owned a home in Williamsburg, MI since 2004.



Tracy Denoyer (Mrs. Denoyer), Title 1/Reading Intervention

Mrs. Denoyer's husband grew up here and graduated from LPS. She shares that it has been a dream of hers to get back to LPS, back to her community, saying "My husband said this is the best place to raise a family and he was right." She spends a lot of time at sporting events with her kids and enjoys getting outside and spending time with her family. In her position, she provides support to students and staff as needed. She looks forward to celebrating the little victories of students as they have their "aha" moments.



Nancy Hayes (Dr. Nan/Nancy), Spanish/World Language Teacher, English Language Learner coordinator

Dr. Nan has been connected to Leelanau County since the mid-1990s through seasonal summer vacations and work for SLBE, where she collected the oral histories of former residents of the Manitou Islands. This past summer she married an East Lelander whom she met while working on South Manitou and moved to Lake Leelanau. "Et voila—a new adventure has begun!" She enjoys all things outdoors, as well as reading, traveling, cooking, and eating, especially chocolate. At LPS she invites students to love learning (in) multiple languages! She feels fortunate that there are so many people who are as excited about language learning as she is. She looks forward to meeting everyone and learning more about LPS and the communities it serves.



Sophie Berner (Ms. Berner), Special Education Aide

Ms. Berner's family has been in Northport since 1965. She moved to her family home to work in Leland and take college classes virtually. She lives on the water and uses it all summer (SUP, sailing, and swimming). In the winter she likes to ski downhill at Crystal Mountain. She is an avid reader and enjoys Gabor Mate, Viktor Frankl, and Eckhart Tolle. As Ms. Berner prepares to be a school psychologist she is learning on the job how to assist varied learners. She enjoys deciphering how students learn and following their individual plans and her career goal is to work with special education students.

Jennifer VerSnyder (Jen, Jenny), Cafeteria Aide, aka Dishwasher!

Jennifer is a fifth generation resident. Her parents went to Leland, her children went to Leland, and now some of their children are in Leland. Jen enjoys the outdoors, working in her garden, fishing, etc., and inside hobbies, especially stained glass. She follows Michigan sports: Michigan, Michigan State and the Leland Comets, of course. Jenny assists the kitchen in day-to-day operations, primarily concentrating on dishwashing and garbage disposal and helping wherever and whenever needed in the cafeteria. She enjoys the never-boring daily happenings and being part of the family-friendly Leland School community, helping to maintain high quality in the food service area.



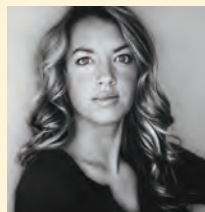
Elizabeth Rutila (Mrs. Ellie), Assistant Cook

Mrs. Ellie moved here from Mexico City to work as a veterinarian. She then met her husband, started a family, and now calls Northport home. She enjoys spending time with her family and working in her garden. She has a dog, two cats, and five chickens and also owns an amazing food truck called Antojitos that runs in Northport in the summer! She loves interacting with the children and getting to know them and looks forward to watching the students grow and being a part of that process.



Emily DeFour (Mrs. DeFour), High School Library Aide

Mrs. DeFour had never visited Leelanau County until she got married here and moved here with her college sweetheart after he accepted a teaching job at LPS. She is a self-taught photographer and considers herself lucky to turn a passion into a business. She can usually be found near a beach, a soccer field, a basketball court, or running her favorite county roads. In her role at LPS, she helps process new books and oversee high school students during their online learning instruction. She enjoys spending time with amazing staff members and students and looks forward to memorizing all the students' names!



Carol Shipley (Miss Carol), Aide

Miss Carol and her husband moved here nine years ago after visiting her parents in Leelanau County for over 40 years. They have three adult daughters and one six-year-old granddaughter who love to visit. In her free time Carol loves to garden and work around the house as well as hike every day with their dog, Hazel. She's excited to meet so many new people and be a part of the school family.



Sharon Hill, Bus Driver

Sharon Hill moved here in 1978 from Muskegon. They had sailed to South Manitou Island when a storm came in and they had to sail to the mainland. They made it to Leland and knew they wanted to live here, so they made it happen! Sharon is a nature lover, always looking at the sky for a beautiful sunset or sunrise, a storm approaching, a rainbow, or the moon reflecting on the water. As bus driver, she starts in the morning greeting the kids as they load up on the bus then says goodbye to them in the afternoon. She says they probably get tired of her asking them to stay in their seats but they are learning. She loves getting a hug from her grandkids and enjoys watching the changes of the students as they grow up.



Señora Creamer (Mariana), Classroom Aide - Middle School Spanish

Sra. Creamer was born in Argentina and her husband is from this area. They moved to Leelanau County in March 2019. One of the reasons was for their kids to know the culture in this country. Sra. Creamer loves spending time with her family, learning about this community (its story, people who form part of this place), and hiking in this beautiful area (she used to live in a city and needed to travel far away to hike). Mariana assists middle school students who have chosen Spanish in a program called Mango (see more on page 5). She likes to collaborate with the students with the Spanish language because in this global world it can be an important tool. She appreciates the kindness that has been shown to her family since they moved here and would like to give back to the school and community.





Be free, butterfly!

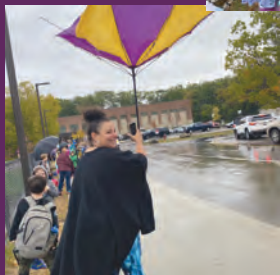
Kindergartners watched as their monarch butterfly emerged from her chrysalis. They said hello and then wished her good luck as they released her outside!



If you see a Kindergarten student ask them how they know she is a female butterfly!



Mrs. Osorio always goes above and beyond for her students...

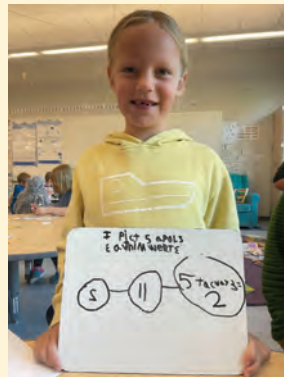


...even in a rainstorm!



Field trip to the apple farm!

Students in 1st - 2nd grades had an incredible field trip to the apple farm at Cherry Bay Orchards. Thank you to our chaperones, and a HUGE thank you to the Miezio family. The Miezos not only opened their busy, working farm to our students, but also provide us with apples every week to fill the bellies of our hungry kids in the classroom.



MATH STRATEGIES

1st grade math students are practicing writing and solving their own number stories. This strategy can be used at any developmental level.

Interlochen School of the Arts presents Suzette Sets To Sea

What a nice opportunity for our students in grades K-6 to be able to take part in the production Suzette Sets To Sea. Our students were superb audience members and hopefully more opportunities like this will be available to us in the future.



Mrs. Vann's 8th graders study world cultures through language exploration



WE ARE USING A PROGRAM CALLED MANGO. WITH EACH STUDENT PROFILE, FAMILIES GET FIVE (5) ADDITIONAL FAMILY PROFILES, SO FAMILIES CAN LEARN A NEW LANGUAGE TOGETHER AT HOME!



Every Wednesday in Mango Language Exploration class, students work in "Language Families" to practice their chosen language aloud and learn more about the associated cultures. One week, the study topic was cuisine! Language Families learned about the history of certain cultural dishes common in the countries in which their language is spoken.



On Fridays, students share their favorite word of the week... each student stands up in front of the class and teaches everyone a new word with a helpful mnemonic or hand gesture.



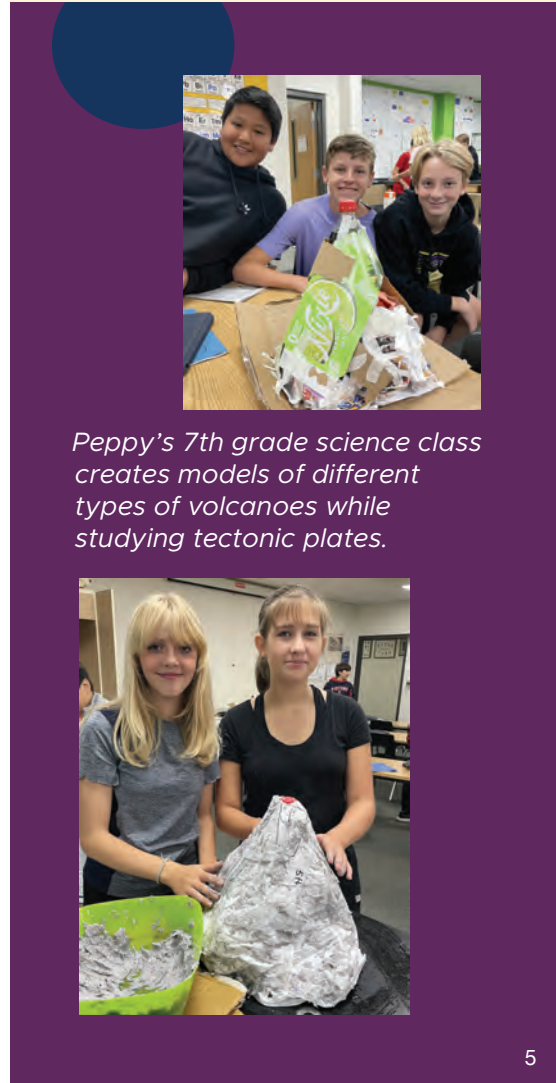
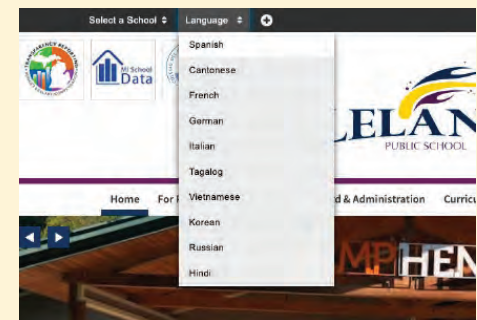
Above left: Tyler Kruse teaches us how to write the word America in Japanese characters! Below left: Vicki Worth teaches us how to prepare crepes, the traditional French breakfast dish. Below right: Ariah Amin and Ellen Schwaiger deliver their slideshow about the Spanish side dish "patatas bravas".



Señora Creamer instructing students in MS Spanish.

TIP: How to get the LPS website to translate into other languages

On our website, at the very top (black bar), choose Language to translate to...



Peppy's 7th grade science class creates models of different types of volcanoes while studying tectonic plates.

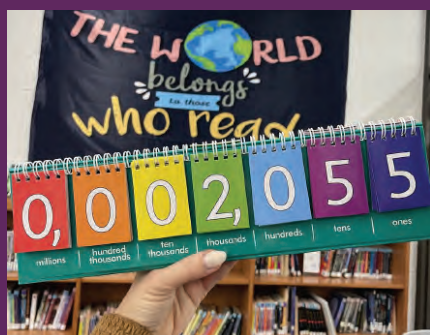
Outdoor education at Camp Henry!

Sixth and seventh graders had a blast experiencing team-building and challenging activities at overnight camp this fall! They spent two days and one night at Camp Henry, on the shores of Lake Kimball outside of Newaygo, Michigan. This was a new experience for many!





Annual Senior Sunrise Breakfast



This year we are trying to reach a goal of 20,000 books checked out from the Library-Media Center as a school. In the first six weeks, the media centers have checked out a total of 2,962 books. We update the count on a flip chart each morning in the elementary library so students can see how close we are to reaching our goal!



LPS Media Specialist Mrs. Clark is demonstrating the use of the iPad eBook/eAudiobook app, Sora to students. Students have access to thousands of titles with just a tap of their hands on their iPads! Readers earn achievements in the app by trying different genres and being well-rounded learners.

The Comets in the Boat

“Way ‘nuff!” bellowed Senior Ari Rodriguez to her eight-person team while coxing aboard the Haylee Judge. Facing the stern of the rowing shell, seven Leland students and one teacher ineptly brought their nearly thirteen-foot oars into the waters of South Lake Leelanau at Rodriguez’s command.

Why might a class of juniors and seniors in Mrs. Vann’s English class be in a rowing shell just off the shores of Fountain Point Resort in the middle of a gorgeous September school day? To gain first-hand experience of the history, art, and technique of rowing as they read Daniel James Brown’s *New York Times* bestselling book titled *The Boys in the Boat*.



“When Brown describes the burning muscles of the rowers, the intellectual rigor of the techniques, and the necessity of working in unison with the other rowers, I knew my students had to experience these things themselves to truly appreciate the book,” said Vann.

Of course as a first-time rower, Vann was not the lead teacher in the classroom that day. Director and Coach of Lake Leelanau Rowing Club Erik Zehender was working alongside LLRC Head Coach Caroline Schaefer-Hills to instruct students in the art and technique of rowing. Two other coaches, Erica and Ethan, also worked with the students as they struggled to find their rhythm out on the lake.



Students started on land learning the stroke pattern on ergometer machines. After the 1K test, students were given the option to take to the water and apply their new knowledge. Most of the students who joined the field trip that day chose to get in the rowing shell; however, two others initially watched from a skiff.

“I wasn’t so sure at first, but then after seeing my friends [row], I knew I wanted to try,” said Senior Lillie Stevens. “It was much harder than I thought.”

As students spend the subsequent weeks reading the remaining chapters of the true story of the 1936 US Men’s Olympic rowing team and the historical context surrounding Adolf Hitler’s rise to power, hopefully, the text will hold more meaning.

Side note: Director Erik Zehender has four scholarships available to Leland students interested in rowing at Lake Leelanau Rowing Club. This offer is extended to other area schools in hopes of creating a county-wide rowing team. “Rowing is an amazing sport that can appeal to the solitary athlete in a skull or an athlete seeking a team in a four- or eight-person shell. For many students, rowing can often open doors of opportunity for collegiate paths and scholarship opportunities. Come row with us!”



Teacher Taylor Vann, Coach Erica, Coach Ethan, Director and Coach Erik Zehender alongside Golden Retriever Boo.



Preparing the boat for launch on South Lake Leelanau.

Move This World: social emotional learning



INFORMATION IS DELIVERED THROUGH AN EXTENSIVE ONLINE LIBRARY OF PREK-12 VIDEOS AND RESOURCES ROOTED IN CREATIVE EXPRESSION THAT HELP STUDENTS, TEACHERS AND STAFF DEVELOP A COMMON LANGUAGE TO IMPROVE COMMUNICATION AND BUILD TRUST.

To support our students' social emotional needs and mental health, we are proud and excited to introduce a video-based social emotional learning (SEL) curriculum from **Move This World** this year for students in grades K-12 and for families to be able to access at home, too!

Social emotional learning is how people learn to process and manage emotions as well as important social skills. It includes everything from goal setting to stress management, and it provides both children and adults with tools they can use to express themselves authentically and safely.

When learning the five main competencies of SEL are prioritized and integrated across settings, they prepare children—and the adults who care for them—for school, work, and life successes. Success means children are able to:

- Develop healthy identities
- Understand and manage emotions
- Achieve personal and collective goals
- Establish and maintain responsible and caring relationships
- Feel and show empathy for others
- Make responsible decisions



The main competencies of SEL are self-awareness, self-management, responsible decision-making, relationship skills, and social awareness.

Why do it?

STUDENTS BENEFIT

- Better social and emotional skills
- Improved attitudes about self, others, and school
- Positive classroom behavior
- 11 percentile-point gain on standardized achievement tests
- Fewer behavioral problems
- Less emotional stress
- Lower drug use

ADULTS BENEFIT

Teachers who possess social and emotional competencies are more likely to stay in the classroom longer, develop and manage nurturing relationships with students, serve as behavioral role models for children, and manage their emotions.

STRONG RETURN ON INVESTMENT

The investment into SEL is 11:1, meaning for every dollar invested, there is an \$11 return. Savings are from costs not incurred for intervention.



Freshman science students kick off food web unit with owl pellet labs!



Eighth graders learn about patterns by making a human graph.



At recess, Sylvie, Elsa, and Merideth have been choosing to spend their time cleaning up our playground. We are so grateful for these caring students who are taking the initiative to keep our school beautiful! IB schools encourage children to take action. This is one of the many reasons we love our IB values.



Lost & Found

Students in Mrs. Sluiter's classroom have started a lost and found project. If your child has misplaced a clothing item or some other possession, please check the link below. If you see the misplaced item, complete the claim form and the item will be returned to your child. Mrs. Sluiter has a couple parents to help and if you would like to offer your support to this amazing project, please let her know!

C3 List of Missing Items: https://docs.google.com/document/d/1Dom42_

PUBLIC SCHOOL MISSION:

The mission of Leland Public School is to sustain an environment where thoughtful interactions and exchanges between students, teachers, and the community, both locally and globally, encourages the development of independently-minded citizens, focusing on exceptional research, critical thinking, and communication skills, and supported by readily accessible, world-class technology. LPS fosters social connection and personal responsibility, providing students with essential tools to pursue fulfilling lives.

Newsletter design by Deb Freed, Leelanau County School Consortium. This is a service of the Northwest Education Services (North Ed).

ECRWSS Postal Patron

Board of Education

Bill RobinsonPresident
Tanja Wittrock..... Vice President
Tom Trumbull Secretary
John Elwell Trustee
Logan Suttman Trustee
Kate Vilter Stassen..... Trustee

Administration

Stephanie Long..... Superintendent
Dr. Dave Botbyl..... Interim Principal
Shawn Stowe..... Business Manager
Ryan Knudsen Athletic Director
Tim McNeil..... Maintenance Director
Tommy Hills..... Technology Director
Shawna SeitterFood Service Director

Guidance

Matt PeschelCounselor & Dean of Students
Heather Lowe Counselor
Kevin Blohm.....School Social Worker
Laurie Glass..... Behavior Interventionist
Hanna Schaub.....Registrar/Pupil Accounting

Santa's Workshop returns!

December 3
9 AM - noon
LPS Cafeteria

The Junior Class Elves will be on hand to help elementary students make crafts and goodies for their friends and family. Reindeer games, bake sale, and hot chocolate bar will be there for all to enjoy!

This fundraiser benefits the Class of 2024!



Global Read Aloud

Multiple 1st through 7th grade classes at LPS are participating in an initiative called the Global Read Aloud. For six weeks, these classes will be joining millions of students from around the world as they all read and discuss the same books. Students will make connections between the stories and some classes will even connect with children from around the world to discuss the books! Authors being celebrated this year include Christian Robinson (a selection of picture books), Jason Reynolds (*Stuntboy*), and Varsha Bajaj (*Thirst*).

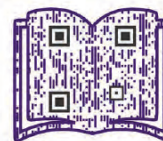
SEARCH THE LPS LIBRARY

SCAN THE QR CODE TO ACCESS THE MEDIA CENTER'S CATALOG



SUGGEST A LIBRARY BOOK

SCAN THE QR CODE TO FILL OUT OUR GOOGLE FORM TO REQUEST THE MEDIA CENTER PURCHASE A BOOK!



Questions or comments? Email Mrs. Clark: aclark@lelandschool.com